

HÄFELE

Let's  
Reimagine

TM

www.hafeleindia.com



PRODOOR

# Hafele

## Reassuring Expertise



*“For almost 10 decades, we’ve been helping people make more of their homes.*

Established in Germany, and now operating worldwide, we specialise in the fittings, hardware and systems that improve the way your home works. So when you choose our products as part of your new or reformed home, you know you’re getting the benefit of extensive knowledge and decades of experience.

And we’re still a family business, owned and managed by family members who really care about the products and service we provide. You can rely on our commitment to the highest standards of quality and

reliability, founded on a long tradition of German engineering where attention to detail is second nature.

*All our home improvement ideas are built to last – day in, day out – we want you to get the very best from every corner of your home, for many years to come.”*

# Hafele

## Worldwide



With its origin in 1923 in a small town named 'Nagold' from the Swabian region of Germany that nurses a passion for hardware technology, it is no surprise that Häfele has lived up to its roots through a successful presence in the architectural and furniture hardware industry for over 9 decades now. Today, Häfele's worldwide penetration includes 38 subsidiaries across Europe, America, Asia, Australia and New Zealand. With these subsidiaries and numerous other sales organisations, Häfele operates in over 150 countries. The Häfele headquarters, 4 manufacturing units and 10 sales offices are located within Germany; while 1 manufacturing unit is located at Budapest, Hungary. The company also owns one of the largest and most sophisticated warehouses in its home country. The Häfele worldwide workforce is empowered by a base of over 8100 employees.

The group services over 150,000 customers across the globe through its extensive range of hardware products and a comprehensive logistics system. In addition to this, Häfele also provides consultative services to its customers, educating and advising them about buying the correct hardware as per their requirements. With this level of market penetration and ability to handle worldwide demand, it comes as no surprise that the company is an authority in the segment of home interior solutions; what is pleasantly surprising, though, is that in spite of its size, Häfele still remains a family owned and run business with a unique, friendly and value-centric work culture which is strongly followed among all its subsidiaries.

# Hafele India



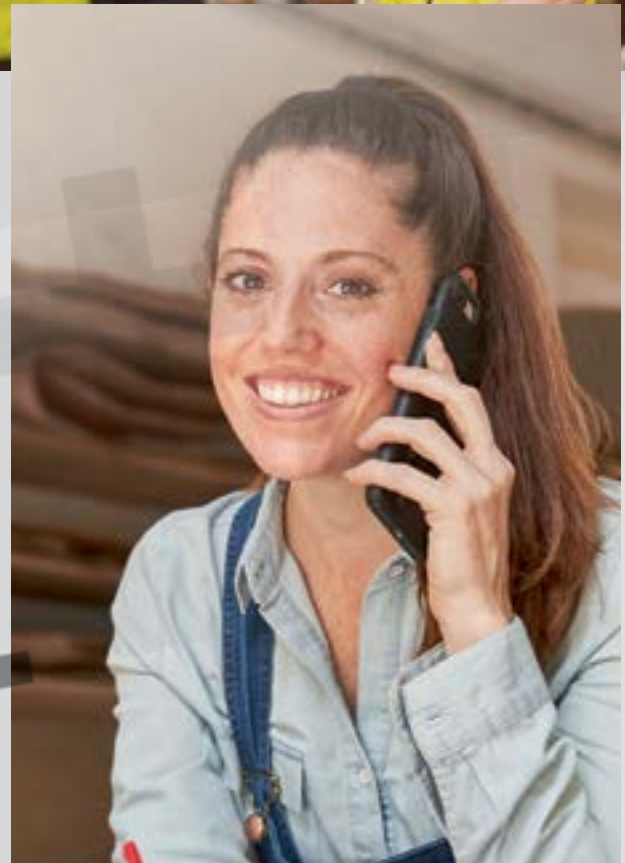
Häfele India is a wholly-owned subsidiary of the Häfele Global network and has been operating in India since 2003 under the leadership of Mr. Jürgen Wolf (Managing Director). The ability of the company to understand the diverse Indian market has made it an authority in the field of architectural hardware, furniture and kitchen fittings and accessories. The company also has a strong presence in synergized product categories namely Home Appliances, Furniture Lighting, Water Solutions and Surfaces catering to the focused demand from these industries.

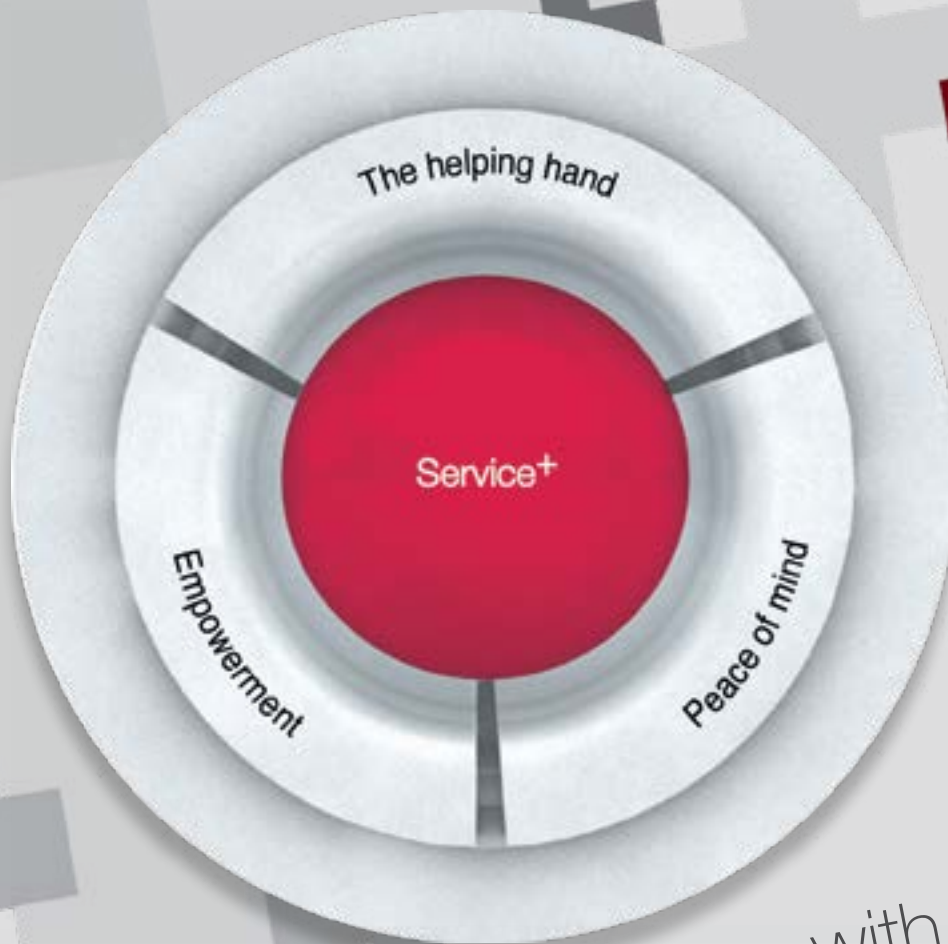
The subsidiary has a strong nation-wide presence with offices in Mumbai, Pune, Ahmedabad, Bangalore, Chennai, Hyderabad, Delhi, Kolkata and Cochin. It has full-scale operations in Sri Lanka and Bangladesh with Regional offices and Design Showrooms in both the countries; and has also spread its operations to other regions of South Asia including Nepal, Bhutan and Maldives.

Häfele's design showrooms are hubs of international home interior trends and cutting edge designs presented in a world-class environment, where customers can see home solutions in their inherent applications. These showrooms function as a one-stop-shop for all home interior and improvement needs - from providing in-depth technical advice to kitchen and wardrobe designing services through a team of experts stationed at the showroom.

Häfele India services its customers with a base of over 1300 employees, a well-networked Franchise base of over 190 shops along with over 500 direct dealers and 90+ distributors who in turn cater to over 8000 satellite dealers. The subsidiary has a sophisticated Logistics centre in Mumbai along with distribution centres in Delhi, Bangalore, Kolkata and Colombo respectively.







## Experience More with **Service+**

Our customers' working environment is becoming increasingly complex and their market is becoming ever more demanding. This drives our motivation to do everything in our power to help our customers be successful. And to demonstrate that Häfele is the right partner in these challenging times, we want to accompany our customers throughout their entire business process and give them added strength in every phase of their business. We don't just want to sell our products, we also want to provide the highest level of service.


We have now divided our services into two categories: **Standard Services** which we provide to our customers as a matter of course when they choose our products. For example, a high availability of our goods and punctual delivery. And then there is **Service+** which constitutes of services that give our customers considerable added value in terms of building expertise, increasing productivity or providing individual customised solutions. These services require a considerable amount of time and effort to develop and implement and are designed to enable our customers to regard them as worthwhile investments.

The aim is to create solid long-term foundations for our comprehensive service promise and to make Häfele an indispensable partner for our customers. The focus here lies not so much on us and on what we do – but rather, on the benefits derived by our customers. We want to **empower** them with opportunities to develop and expand their skills – both as masters of their trade and as entrepreneurs. We want to support them in the planning and realisation of their projects and relieve them of as much work as possible, thereby providing them with a **helping hand** to use their most valuable resource – time – as efficiently as possible. And we aim to give our customers **peace of mind** and the assurance that even after the end of a successful project completion, we will continue to be there for them as a reliable partner, shouldering responsibility.



A technical line drawing of a HAFELE hinge mechanism is displayed on the laptop screen. The drawing shows the internal components and the hinge's profile. The HAFELE logo is visible on the drawing. The drawing is framed by a red line that extends across the page.

# The Pillars of **Service+**

A close-up photograph of a person's hands typing on a laptop keyboard. The hands are positioned over the keyboard, with fingers resting on the keys. The keyboard is black with white lettering. The background is blurred, showing a desk and a chair.

In order to support you as comprehensively as possible, we have assigned the Plus Services to individual stages of your work process in a total of four themed pillars. We start with the transfer of knowledge and accompany you via planning and production to installation and maintenance.



Empowering customers with  
**Service+ Knowledge**

---

Includes service offerings that provide inspiration and expertise to our customers about the Häfele product range. Through these, we enable our customers to use Häfele products profitably and at the same time remain at the cutting edge of technological development. One example of this is the Häfele Academy, which imparts knowledge about complex products and new technologies to our customers via seminars and trainings.

Providing a helping hand to customers with  
**Service+ Planning & Customised**

---

Includes service offerings like space, design planning and customisations that make life easier for our customers and support their design vision. An example of this is Häfele's Lighting Design Service which helps our customers curate a lighting plan, following a customised approach, that enhances and brings out the true functionality of the interior space as per requirement.



Lending a "Peach-of-mind" experience through  
**Service+ Assist**

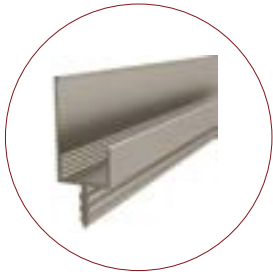
---

Includes service offerings that provide support and assistance to our customers, whether digitally or on site. An example of this is the complete assembly and installation service for more complex and maintenance-intensive products done by our Meister certified and trained technicians.





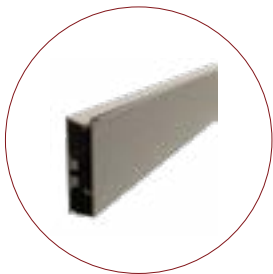
# Contents



## MATCH DOOR

Pages 14-21

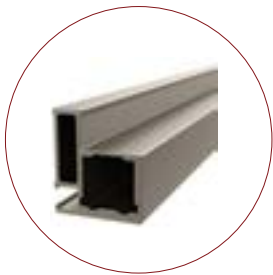
Handle-less Appearance | Matching Colour Handles



## PLUSCH DOOR

Pages 22-31

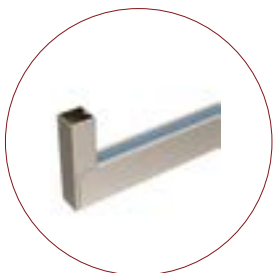
Handle-less Appearance | Customized Edge Banding



## KLAR DOOR

Pages 32-41

Minimalist Build | Vintage-inspired Contemporary Design



## WARDROBE RAIL

Pages 42-48

Integrated Lighting | Contemporary Design





## PRODOOR

In the world of design, trends change and evolve continuously with new innovation and technology. Keeping up with them and bringing to you the latest, technologically advanced and price-competent solutions for your home interiors is what we at Häfele strive to achieve. Kitchen as an area of the house, especially with many now opting for contemporary layouts that foster openness and community building activities among family members, often attracts the potential for constant innovation through the ever-evolving usage patterns and the ever-changing definitions of functionality and ergonomics.

Häfele introduces a new collection – ProDoor under its Aluminium Profiles Range that will enable you to visualise your furniture as a canvas and will let you play around with fittings, bringing to you the possibility of achieving trends such as handle-less doors, adaptive colour schemes, vintage-inspired contemporary designs and clean door designs with no visible hardware.

Häfele's ProDoor Range attempts to provide you with an array of profile systems for constructing cabinet doors that flawlessly complement the overall design aesthetics of not only the kitchen but also other living spaces of your home and have the potential of upgrading them to their most contemporary version yet. The range comprises of Match Door, Plusch Door, Klar Door and Wardrobe Rail. These door systems are available in two classic finishes, Brushed Stainless Steel for silent sophistication and Brushed Black for a hint of dramatic flair.





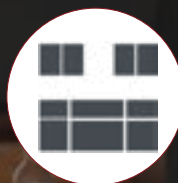
## MATCH DOOR

For an overall clean and immaculate kitchen appearance, people are increasingly opting for handle-less kitchens. Handle-less solutions ensure that the kitchen interiors are completely clear with seamless visuals of cabinet and drawer fronts.

Match Door Profiles transform this vision beautifully into a reality. Fundamental in style and providing you with the option of customisation, these profiles offer you the freedom of working with the colour and tonality of your kitchen, creating it as per your imagination.

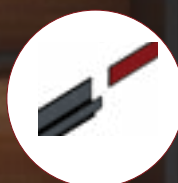






**Handle-less and minimalistic appearance:**

Match Door Profiles provide a modern handle-less look to your kitchen space. They are functionally useful in the form of handles as well as aesthetically pleasing when seen as part of the kitchen layout.



**Can be matched to the décor:**

With Match Door Profiles, you have an option of customising your door design by pasting an edge band in the slot provided. Whether you want to match the profile to your doors for a unified look or make the profile lining pop out in the kitchen layout, the possibilities are endless.



**Ventilation for hobs:**

The Match door profile installed onto the top drawer can be perforated to provide efficient ventilation for built-in hobs.

## MATCH DOOR

### APPLICATION



#### ▶ With Edge Banding

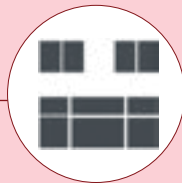
If your kitchen design demands a play on colour, you can easily extend the colour theme onto your Match Door Profiles that give you an option of pasting an edge-banding of any colour you desire onto the profile, thereby helping you achieve synergy in the overall aesthetics.

#### ◀ Without Edge Banding

The Match Door Profiles inherently come in trendy finishes, Brushed Stainless Steel and Brushed Black. If you love minimalist design and colour schemes, you can use the profiles as is without adding that extra element of edge banding. The slightly lustrous finish of the profiles makes for an interesting addition in kitchens with traditional colour patterns.

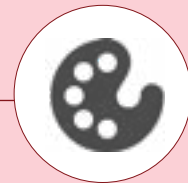


## TRENDS MATCH DOOR CONTRIBUTES TO



### Handle-less Appearance

Handle-less kitchens have gained tremendous popularity in the recent years owing to the clean and sophisticated look they provide to your kitchen. Made possible through solutions like push-to-open (automatic-opening) mechanisms and profiles for cabinet doors, handle-less kitchens not only promote convenience but also create a view of streamlined flow in kitchen units resulting in a chic and clutter free look.



### Customisation in Colour Schemes

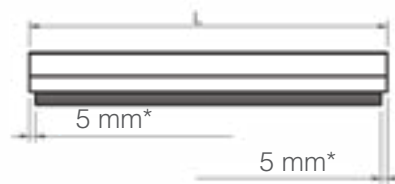
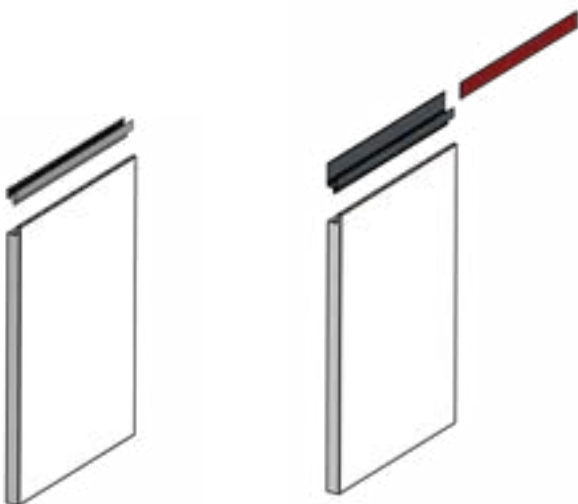
The kitchen is one of the places in the home where one spends a lot of time. It is therefore essential that it should look and feel comfortable, inviting, and most importantly 'you'. With customisations of key kitchen fittings, you can create your own colour scheme – whether monochromatic, where everything blends together or dual and multi-tone, where numerous colours are at play. You can also introduce colour pops that help break the monotony of a set coloured pattern and lay emphasis on a few furniture elements that need highlighting.






MATCH DOOR



ASSEMBLY



-  Match Door Profile - Short
-  Match Door Profile - Tall
-  Edge Band

L: The length of the profile should be equal to the width of the panel  
 Edge banding thickness: Up to 1 mm

\* The part of the profile that fits into the groove of the panel needs to be shortened by 5 mm from both sides

## MATCH DOOR

### PRODUCT SPECIFICATIONS

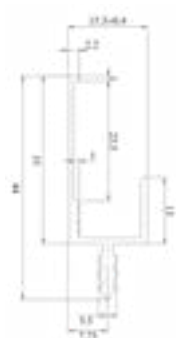
Match Door - Tall



Brushed Stainless Steel



Brushed Black



Article no.	563.93.863	563.93.363
Finish	Brushed Stainless Steel	Brushed Black
Material	Aluminium	
Length	3000 mm	
Min. Door Thickness	18 mm	
Customisation Option with Edge Band Available	Yes	
Edge Band Dimensions	Height: 21 mm, Thickness: Up to 1 mm	
Application	Cabinets, top and bottom drawers in two/ three drawer configurations	

Match Door - Short



Brushed Stainless Steel



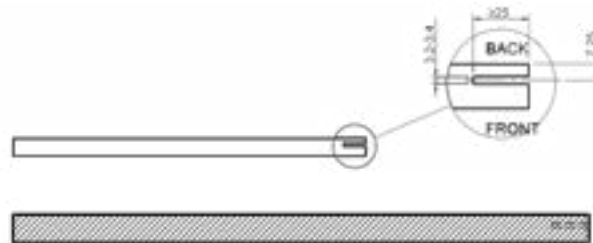
Brushed Black



Article no.	563.93.873	563.93.073
Finish	Brushed Stainless Steel	Brushed Black
Material	Aluminium	
Length	3000 mm	
Min. Door Thickness	18 mm	
Customisation Option with Edge Band Available	No	
Application	Middle drawers in three drawer configurations	

MATCH DOOR

INSTALLATION



- ① Cut the panel for the drawer front or cabinet door according to the size required and cut the profile equal to the width of the panel.

- ② Make a groove in the panel for the profile to be inserted and stick edge banding along all the edges (thicknesses) of the wooden panel



- ③ Route out the space for positioning the handle

- ④ Apply silicon glue and press the match handle profile into position. You can paste edge band on the profile if needed.

TIPS TO ACHIEVE BETTER ASTHETICS



Fig. a: Two drawer configuration

Fig. b: Three drawer configuration

1. For a two drawer configuration, the tall version of match door profile is used for both the top and bottom drawers.
2. For a three drawer configuration, there are two possibilities of installation:
  - tall-tall-tall - for a spacious look
  - tall-short-tall - The short profile can be installed below the second drawer for a minimum gap between the top two drawers and low profile visibility (refer fig. b)



## PLUSCH DOOR

Plusch Door from the ProDoor Range goes one step beyond your conventional profiles. Multiple design schemes depending on the vision you are going for are now possible! With Plusch Door Profiles, you can experiment with different materials for the cabinet doors and drawer fronts like veneer, glass, metal sheets and ultra-compact stone surfaces like Dekton to create visually stunning interiors while keeping the door weight light. All the hardware and screws are hidden conveniently behind the decor material from the front while a thin back panel slid into the frame from the inside seals the hollow cavity created by the profiles, leaving you with flawless-looking furniture doors. The back panel colour can be matched to the cabinet interiors in order to create seamless aesthetics.



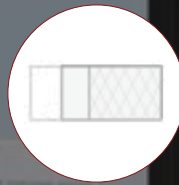






**Lightweight shutters:**

The Plusch Door Profiles when joined together form a hollow frame for the cabinet door. The decorative material is stuck onto the exterior frame side while a thin 2 mm back panel is slid into the frame interior. Even heavy materials like stone can be used in the form of thin sheets as the décor material. This construction makes the cabinet doors extremely lightweight, enhancing overall ease.



**Decorative materials for doors:**

As Plusch Door Profiles form the basic frame structure for the cabinet front, you have complete freedom in experimenting with the material of the door in addition to the more traditionally used wood and glass. Decorative materials like veneer, stone, metal sheets can be stuck on to the frame to create stunning design concepts in your kitchen.



**Customisable 2 mm back panel:**

Plusch Door Profiles come with a provision to slide in a 2 mm back panel to fill up the hollow cavity inside. This makes the structure of the shutter look wholesome and stable while maintaining its light weight. This panel can be matched to the colour of your cabinet interiors.



**No visible joinery:**

The connectors used for joining the Plusch Door Profiles are fixed with screws from the front (outward facing portion) of the profile, which is then covered by the decorative door material. There is hence no hardware visible from any side of the assembled cabinet door providing a clean and immaculate appearance.

## PLUSCH DOOR

### APPLICATION



#### ▶ Handle and Main Profiles for Framed Doors

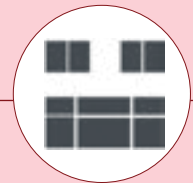
Plusch Door Handle and Main Profiles are the primary shutter construction units. The handle profile on one side and three main profiles on the other, form a frame on to which the decorative door material is stuck.

#### Wooden Door Profiles

The Plusch Door range has two profiles for wooden doors, Wooden Door Lip Profile and Handle Profile. The lip profile is a simple profile that can be fixed on wooden doors to match the profile theme used for other cabinets and the handle profile can work as an individual handle for any drawer front or cabinet door.



## TREND PLUSCH DOOR CONTRIBUTES TO



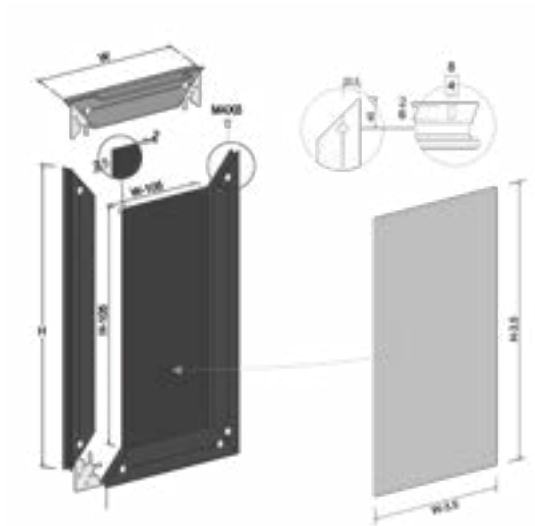
### Exploring New Design Possibilities with Different Materials




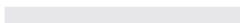


Gone are the days, when your furniture doors were formed entirely of wood, ply and laminates. With the aim of bringing about a change in the aesthetics of the kitchen and to explore new design possibilities, we now have kitchen furniture exhibiting stone surfaces, glass exteriors, metal sheets and veneer. This opens up a whole new world of materials for us to experiment with while attaining the same or improved level of functionality.

**PLUSCH DOOR**

**ASSEMBLY**

Plusch Door Main and Handle Profiles

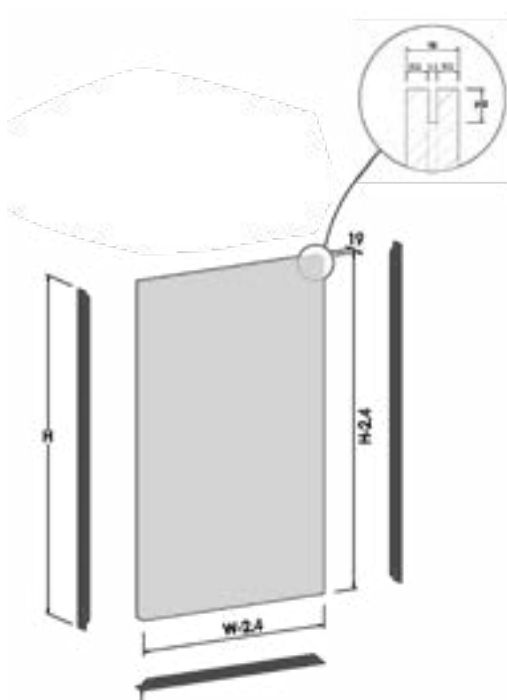





-  Plusch Door Handle Profile
-  Plusch Door Main Profile
-  2 mm back panel (inserted into the groove in the back of the frame)
-  Kite connector
-  Countersunk screw
-  3-6 mm decorative material (pasted on the front of the frame, visible from outside)

W: Width of the door  
 H: Height of the door  
 Width of the decorative material: W-3.5  
 Height of the decorative material: H-3.5

Note:  
 The screw holes are to be made on the face of the profile (which is then covered by the door material that gets stuck onto it) instead of at the back like in case of regular profiles.

Plusch Wooden Door Lip and Handle Profiles



-  Plusch Wooden Door Handle Profile
-  Plusch Wooden Door Lip Profile
-  Wooden panel

W: Profile length along the width of the door  
 H: Profile length along the height of the door  
 Width of the wooden panel: W-2.4  
 Height of the wooden panel: H-2.4



## PLUSCH DOOR

### PRODUCT SPECIFICATIONS

#### Plusch Door Main Profile



Brushed Stainless Steel



Brushed Black



Article no.	563.93.003	563.93.303
Finish	Brushed Stainless Steel	Brushed Black
Material	Aluminium	
Length	3000 mm	
Weight of the Profile	2.27 kg	
Decorative Material Thickness	3 – 6 mm (Up to 4 mm for glass and stone)	
Back Panel Thickness	2 mm (Material Recommended: Aluminium Composite Sheet)	
Application	Non handle sides of the shutter frame. <b>Recommended for sliding doors</b>	

#### Plusch Door Handle Profile



Brushed Stainless Steel



Brushed Black



Article no.	Brushed SS	563.94.014	563.94.015	563.94.011	563.94.012	563.93.013 (Left)	563.93.023 (Right)
	Brushed Black	563.94.314	563.94.315	563.94.311	563.94.312	563.93.313 (Left)	563.93.323 (Right)
Material	Aluminium						
Length	200 mm	500 mm	1000 mm	1800 mm	3200 mm	3200 mm	
Handle Length	100 mm	200 mm	500 mm	1000 mm	1200 mm	1200 mm	
Weight of the profile	0.15 kg	0.37 kg	0.74 kg	1.33 kg	2.36 kg	2.36 kg	
Decorative Material Thickness	3 – 6 mm (Up to 4 mm for glass and stone)						
Back Panel Thickness	2 mm (Material Recommended: Aluminium Composite Sheet)						
Application	Handle side of the door frame						

**MATCH DOOR**
**PRODUCT SPECIFICATIONS**

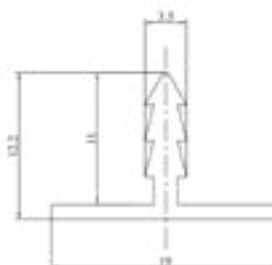
Plusch Wooden Door Lip Profile



Brushed Stainless Steel



Brushed Black



Article no.	563.93.033	563.93.333
Finish	Brushed Stainless Steel	Brushed Black
Material	Aluminium	
Length	3000 mm	
Door Thickness	18-25 mm	
Application	Edges of wooden shutters	

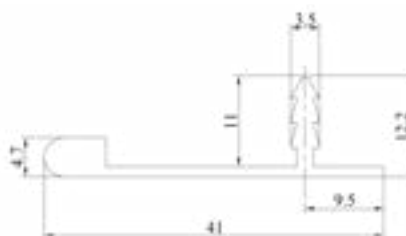
Plusch Door Handle Profile



Brushed Stainless Steel



Brushed Black



Article no.	Brushed SS	563.94.044	563.94.045	563.94.041	563.94.042	563.94.043 (Left)	563.93.053 (Right)
	Brushed Black	563.94.344	563.94.345	563.94.341	563.94.342	563.93.343 (Left)	563.93.353 (Right)
Material	Aluminium						
Length	200 mm	500 mm	1000 mm	1800 mm	3200 mm	3200 mm	
Handle Length	100 mm	200 mm	500 mm	1000 mm	1200 mm	1200 mm	
Back Panel Thickness	18-25 mm						
Application	Handle side of the wooden shutter						

Kite Connectors



Article no.	564.94.995*
Finish	Steel
Material	Zinc Plated Steel

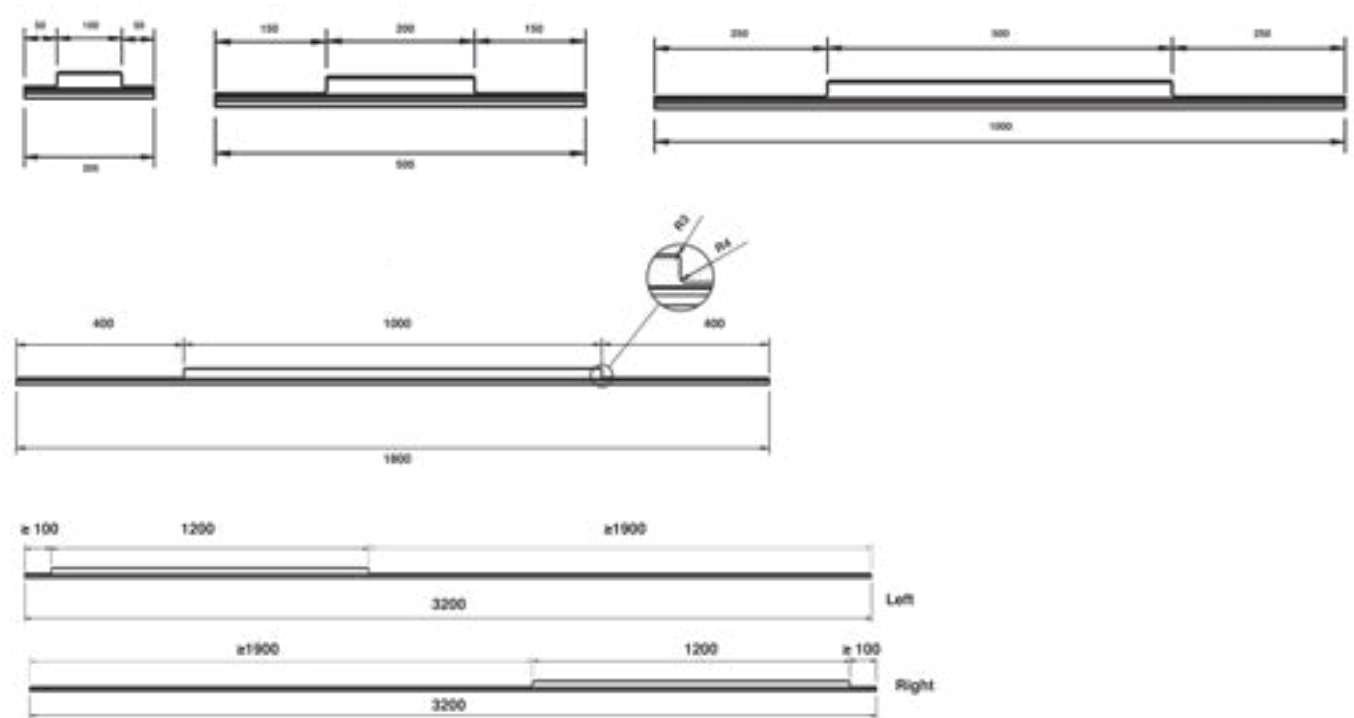
\*The kit consists of 4 kite connectors and fixing screws.

## PLUSCH DOOR

### TECHNICAL SPECIFICATIONS


#### Plusch Door Main Profile

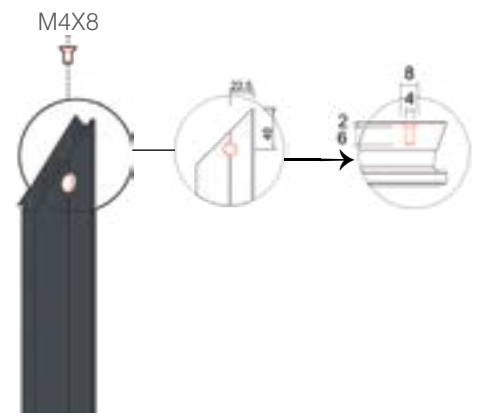
The length of the handle in the Plusch Door and Plusch Wooden Handle Profiles are shown below. For profile of lengths 200 mm, 500 mm, 1000 mm and 1800 mm, the handle is positioned at the centre of the profile; for profile lengths of 3200 mm, the handle is positioned at the ends of the profile. The 3200 mm handle profiles come in a left and right version, ideal for use on tall cabinet and wardrobe doors.




### INSTALLATION

#### Plusch Door Main and Handle Profiles

- 

45° Mitre Cut
  - 

M4X8
  - 
- 1 Mitre cut the Plusch Door profiles according to the desired length of the door frame. Remember that the handle profiles will be cut from both ends equally.
  - 2 Make the drilling holes for screws using the guiding line on the profile as per the dimensions above. Screw holes should be made in the front of the profiles instead of back like in case of regular profiles.
  - 3 Insert the kite connector and join two profiles to create one corner of the frame structure.



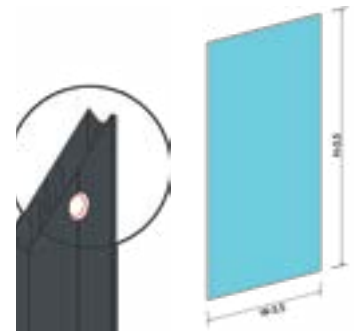
PLUSCH DOOR



- 4 Insert a 2 mm back panel into the partial frame (dimensions as shown above where W = width of the door, H = height of the door) in order to cover the hollow part in the profile door.



- 5 Using the kite connector, join the other profiles and lastly insert the handle profile. The structure is completely ready now.

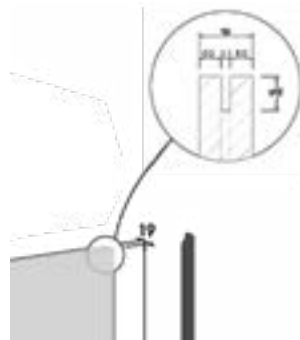


- 6 Using the kite connector, join the other profiles and lastly insert the handle profile. The structure is completely ready now.

Plusch Wooden Door Lip and Handle Profiles



- 1 Prepare the Plusch Door profiles and wooden panel for shutter according to the dimensions shown above. Remember the handle profiles will be cut from both ends equally. After cutting the profiles, mitre cut only the portion of the profile that fits into the groove.



- 2 Make the grooves in the wooden panel on all the sides. The panel thickness can differ from the one shown here (19 mm). In that case, note that the groove needs to be made exactly in the centre of the panel thickness.



- 3 Apply silicone glue and insert the profiles inside the grooves of the panel.





## KLAR DOOR

Häfele has the right product for every area of your home. Klar Door creates smart and elegant looking cabinet systems and can be used in multiple areas of your home. Perfect for wall units, wardrobes, bar cabinets, etc., the unique structure of the profile helps create vintage-inspired contemporary designs with the handle running along all sides. It is a versatile profile that not only is apt for your kitchens but also seamlessly extends the kitchen design to adjoining multipurpose living spaces. Klar Door can also be clubbed with Häfele's Wardrobe Accessories to create sophisticated wardrobes or storage solutions. Complementing the Klar Door are Klar Door Hinges especially designed for their slim form. This hinge enables soft closing of the door for silent operation.





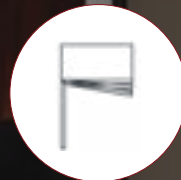


**Profile with built-in handle:**

The Klar Door Profile comes with a built-in handle which runs on all four sides of the door thus providing uniformity in design. Since the handle is a part of the profile, the ordering process becomes easier.

**Concealed hinges:**

Klar Door Profile is compatible with Klar Door hinges that are specially designed to be installed into the thickness of the profile and the cabinet thus making them completely invisible when the door is closed. These hinges are compatible with wooden doors as well.

**Soft-closing mechanism:**

The Klar Door Hinge is equipped with a soft closing mechanism ensuring silent closing of cabinet doors making way for peaceful operation.

## KLAR DOOR

### APPLICATION



#### Klar Door - Glass

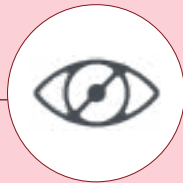
Profiled glass doors created using Klar Door Profiles provide an air of sophistication to your kitchens. The protrusion in the structure of this profile is uniform on all four sides, serving as a handle and also a design element for any glass door cabinetry.



#### Klar Door - Wood

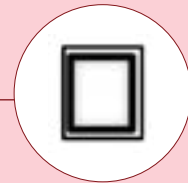
The Klar Wooden Door Handle from this range is intended for wooden shutters. This comes in handy when you want to maintain a design continuity between your Klar glass door cabinets and your wooden door cabinets.

### TRENDS KLAR DOOR CONTRIBUTES TO



#### Minimalist Build

Functionality achieved with things you can't see is magic. The popular 'invisible / no hardware' trend essentially means that the hardware used is hidden from your eyes and tucked away inside the material of the furniture. The result is minimalist and sophisticated aesthetics.



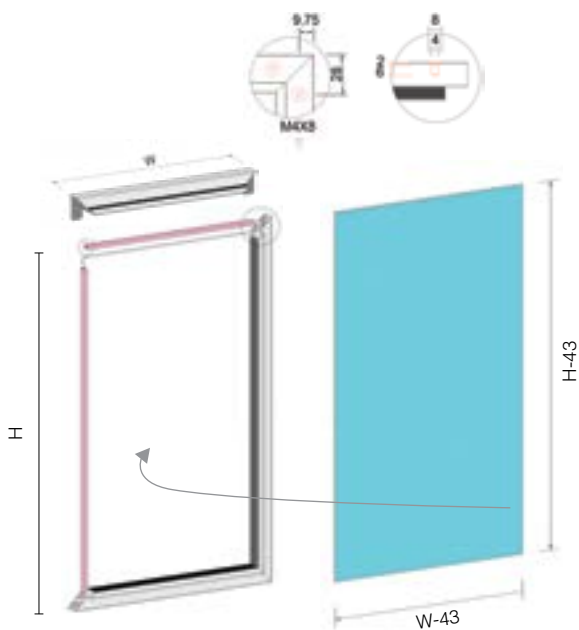
#### Vintage-inspired Contemporary Design

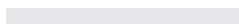




As we are evolving and moving towards new designs, it is also interesting to look back and adopt some classic layouts. A niche area for people who want the best of both worlds - functional contemporary with artistic and distinctive vintage designs, this combination provides a unique look for modern homes.

KLAR DOOR



ASSEMBLY



-  Klar Door Profile
-  4-5 mm Glass
-  C Shaped Gasket
-  Corner Connector
-  Countersunk Screws

W: Width of the door  
H: Height of the door

Width of glass panel: W-43  
Height of glass panel: H-43

Note: The overall weight of the shutter (glass and profiles) should not exceed 20 kg





**KLAR DOOR**

**PRODUCT SPECIFICATIONS**

Klar Door Hinge



Silver



Black

Article no.	342.79.331 *	342.79.332 *	342.79.700 **	342.79.300 **
Finish	Silver	Black	Silver	Black
Application	Profiled Doors		Wooden Doors	
Material	Aluminium			
Door Dimensions	Height: Max. 2100 mm, Width: Max. 600 mm, Thickness: 18-32 mm (for Wooden Doors)			
Door Weight	Max. 20 kg			
Adjustments	Horizontal, Vertical and Depth			
Opening Angle	103°			
Integrated Soft Close Mechanism	Available			

\* These are BOM kits for profiled doors: consisting of 2 hinges (left + right), 2 corner brackets (left + right) and 2 corner connectors for profiles

\*\* These are BOM kits for wooden doors: consisting of 2 hinges (left + right)

Corner Brackets

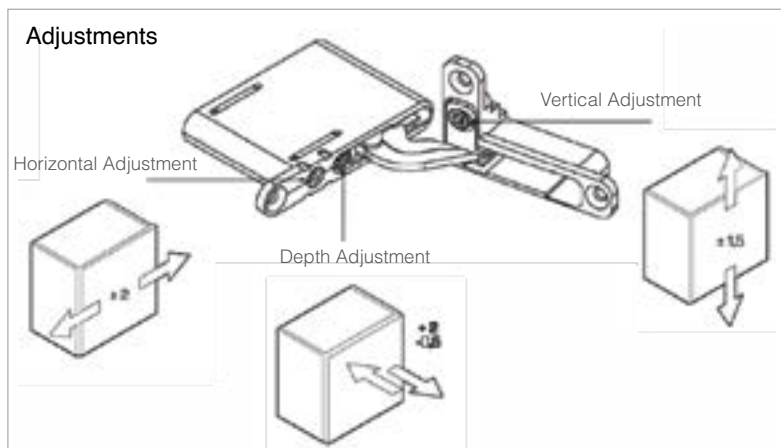


342.79.717 – Right  
342.79.718 – Left

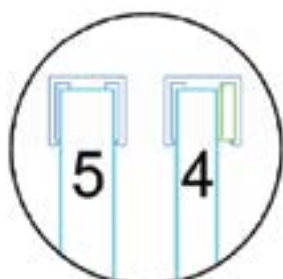
Corner Connectors



564.94.996



Gasket



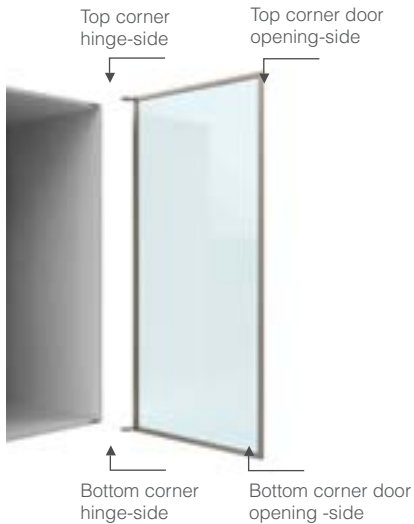
Article no.	563.95.391	563.95.390*
Description	C Shaped Gasket for 5 mm glass	Filler Gasket for 4 mm glass
Material	PVC	
Finish	Black	
Length	3000 mm	1000 mm

\* For 4 mm glass, please use 4 mm Filler Gasket along with 5 mm C Shaped Gasket



KLAR DOOR

INSTALLATION OF KLAR DOOR - GLASS



1 Mitre cut the profiles in the desired length.



2 Make the milling in the profiles (that form the top and bottom corners of the door on the hinge-side) to fit the corner bracket.



3 Insert the corner bracket from the Klar Door Hinge set into the profiles that form the top hinge-side corner of the door and fix it in place with the help of screws.



4 Insert the corner connector into profiles that form the top corner on the door opening-side and fix it.



5 As mentioned in the earlier steps, fix the corner bracket and the corner connector into the left and right top corners to form three sides of the frame. Insert the glass along with the gasket into the frame and fix the bottom profile with the help of the remaining corner bracket and connector.

The total weight of the shutter should not exceed 20 kg.



6 Insert the Klar hinge into the grooves of the corner brackets installed on the top and bottom corners of the door on the hinge-side.



7 Make cavities according to the technical specifications for the Klar hinge body in the top and bottom panels of the cabinet.



8 Insert the hinged door into the top and bottom wooden panel cavities and screw it tightly. You can accurately align the door with the help of the adjustable screws in the hinge.

## WARDROBE RAIL

---

The Wardrobe Rail is a valuable addition to Häfele's Wardrobe Accessories range and fits in perfectly with wardrobes made with the Klar Door or Plusch Door Profiles. Available in the same two finishes of Brushed Stainless Steel and Black, the wardrobe rail complements the other profiles in this range. It comes with a provision to install LED Strip Lights and diffusers offering ambient/functional lighting inside your wardrobes.





## Provision to add LED Lighting:

Häfele's Wardrobe Rail comes with a provision for installation of LED strip lights that can provide ample functional or desired ambient lighting inside your wardrobe. You can install strip lights from Häfele's Loox5 to achieve the required lighting effect in your wardrobe.



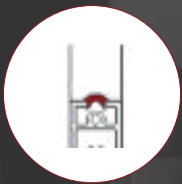
## Matching finishes with profiles:

A Wardrobe Rail is available in the same two finishes as the door profiles in this range, Brushed Stainless Steel and Brushed Black which makes it the right choice for wardrobes constructed with Klar Door and Plusch Door.



## Anti-noise and anti-scratch rubber strip:

The anti-noise rubber strip that comes with the Wardrobe Rail Profile absorbs unnecessary noise that might be created due to clashing of hangers as well as helps prevent scratches on the profile.



## Top and side mounting possibilities:

The Wardrobe Rail can be mounted from the top as well as from the side according to the space available in your wardrobes.







**WARDROBE RAIL**

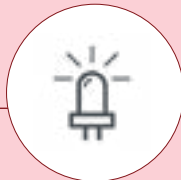
**APPLICATION**



▶ **Wardrobes**

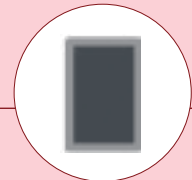
Simply put, the wardrobe rail acts as a rail for hanging clothes inside the wardrobe. The different finishes of this profile align with materials used to construct wardrobes most frequently. It also matches with Klar Door and Plusch Door profiles from this range that can be used to build wardrobes and cabinets, providing a wholesome look to your interiors.

**TRENDS WARDROBE RAIL CONTRIBUTES TO**



**Integrated Lighting**

When you have the option of combining multiple functionalities, why stick with just one? Combining lighting with furniture has been a rising trend in the recent years, mainly due to its contribution to convenience, design and aesthetics. With integrated lighting you get focused access to different sections of your home furniture, however small the area might be.

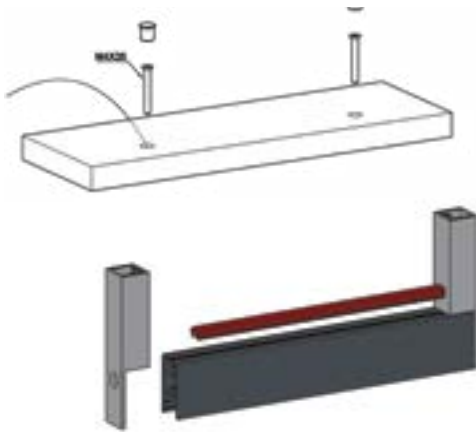
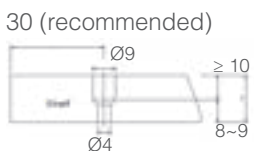


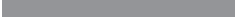



**Contemporary Design**

Simple is beautiful! The modern world with its many complexities is racing towards natural and uncluttered designs and products to adorn their homes. Sharp geometric structures as a part of any furniture element create an impression of clean design and minimal elegance.

**ASSEMBLY**

Wardrobe rail profile installed with top fixing brackets



-  Wardrobe Profile Hanging Bracket for Top Fixing
-  Wardrobe Rail Profile
-  LED Striplight
-  Diffuser for LED Striplight



WARDROBE RAIL

ASSEMBLY

Wardrobe rail profile installed with side fixing brackets



PRODUCT SPECIFICATIONS

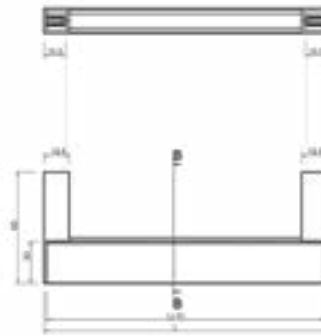
Wardrobe Rail Profile



Brushed Stainless Steel



Brushed Black



Article no.	564.94.003	564.94.303
Finish	Brushed Stainless Steel	Brushed Black
Material	Aluminium	
Dimensions	1500 (L) x 30 (H) x 18 (W) mm	
Application	Wardrobes	
Weight Carrying Capacity	15 kg (up to a length of 900 mm); 12 kg (up to a length of 1200 mm) [Trial is recommended for higher widths]	
Colour of the Diffuser	Milky White	
Installation	Side and Top Fixing	

Note: The rubber strip and diffuser are provided along with the Wardrobe Rail while the LED Strip Light needs to be ordered separately.

Wardrobe Profile Hanging Brackets



Brushed Stainless Steel



Brushed Black



Brushed Stainless Steel



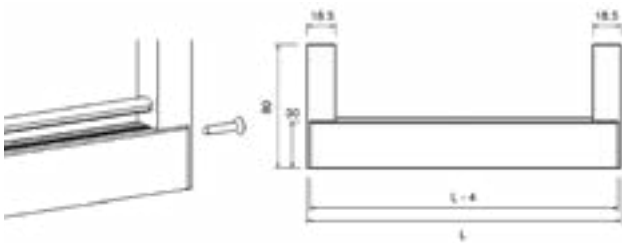
Brushed Black

Article no.	564.94.097	564.94.397	564.94.091	564.94.391
Installation	Top Fixing		Side Fixing	
Finish	Brushed Stainless Steel	Brushed Black	Brushed Stainless Steel	Brushed Black
Material	Aluminium			
Application	Wardrobes			

## WARDROBE RAIL

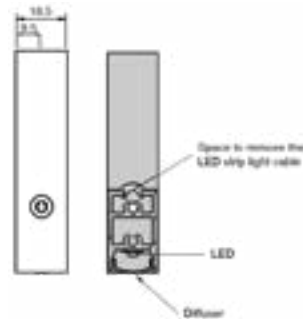
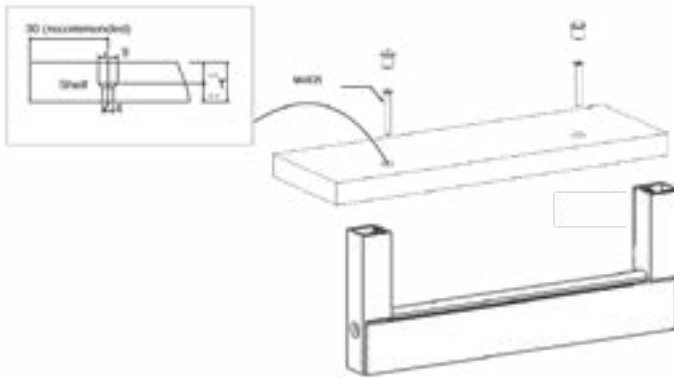
### INSTALLATION

#### Top Fixing



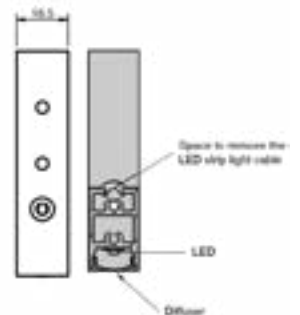
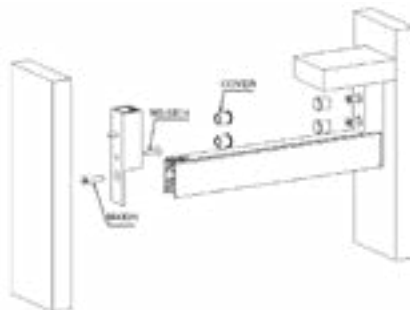
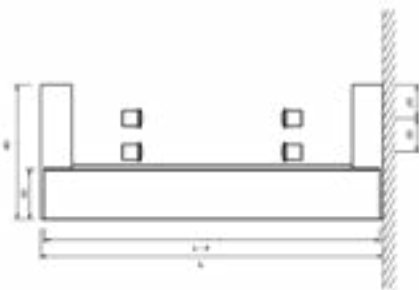
- 1 Cut the profile equal to  $L - 4$ , where  $L$  is internal width of the wardrobe. Fix one hanging bracket to the rail with the help of screws.

- 2 Cut the length of the rubber strip ( $L-41$ ) and fit it into the top groove of the wardrobe rail. Fix the other hanging bracket to the rail.



- 1 Drill holes and insert screws on the top panel of the cabinet. Insert the LED strip and slide-in the diffuser. LED cable can be taken out from the space at the top of the connector and plugged into power supply. Fix the wardrobe rail assembly to the top panel by tightening the screws.

#### Side Fixing



- 1 Cut the profile equal to  $L - 4$ . Fix one side fixing bracket onto the cabinet side. Insert the profile into the side bracket and fix the rubber strip of length  $L-41$

- 2 Insert the LED strip and install the diffuser. LED cable can be taken out from the space at the top of the connector and plugged into power supply. Fix the second bracket to the other side and join the profile and the bracket.