

PRICE LIST

W.E.F. 01-04-2024



indobrass[®]

Securing boundaries, Ensuring peace.

indobrass[®]

Securing boundaries, Ensuring peace.



Unlocking Secure
Solutions for Tomorrow.

index

MORTISE HANDLES

OPULENTO	01
ELEGANTE	02
CLASSICO	03
MODESTO	04
STAINLESS STEEL	05

PULL HANDLES

LOCKS	07
HIGH SECURITY LOCKS	08
FURNITURE LOCKS	08
CYLINDERS	09
DOOR ACCESSORIES	10-11

OPULENTO

MORTISE HANDLES

indobrass®



TAURUS



ROMANTICA



KRISH



STERLING



RADIANT

RANGE	STANDARD FINISHES BG/AB/AC/SS/BL	MATT FINISHES BM/MAB/MAC/GG/GB/MB
Handle Set On Rose	4800/-	5200/-
Handle Set On Plate	4800/-	5200/-
Rose Combo Set with Lock And Cyl. 70mm-D/C	6860/-	7260/-
Plate Combo Set with Lock And Cyl.70mm-D/C	6860/-	7260/-
Rose Combo Set with Lock And Cyl.70mm-S/C	6940/-	7340/-
Plate Combo Set with Lock And Cyl.70mm-S/C	6940/-	7340/-



RAMEE



GEORGIA



SCORPIO



INNOVA

RANGE	STANDARD FINISHES BG/AB/AC/SS/BL	MATT FINISHES BM/MAB/MAC/GG/GB/MB
Handle Set On Rose	4300/-	4700/-
Handle Set On Plate	4300/-	4700/-
Rose Combo Set with Lock And Cyl. 70mm-D/C	6360/-	6760/-
Plate Combo Set with Lock And Cyl.70mm-D/C	6360/-	6760/-
Rose Combo Set with Lock And Cyl.70mm-S/C	6440/-	6840/-
Plate Combo Set with Lock And Cyl.70mm-S/C	6440/-	6840/-

ELEGANTE

MORTISE HANDLES

indobrass®



KUONI



STYLISH



EXCEL



MOULY



SIDHI

RANGE	STANDARD FINISHES BG/AB/AC/SS/BL	MATT FINISHES BM/MAB/MAC/GG/GB/MB
Handle Set on Rose	4400/-	4800/-
Handle Set on Plate	4400/-	4800/-
Handle Set on 8" CY / KY Plate	4000/-	4400/-
Rose Combo Set with Lock and Cyl. 70mm-D/C	6460/-	6860/-
Plate Combo Set with Lock and Cyl.70mm-D/C	6460/-	6860/-
Rose Combo Set with Lock and Cyl.70mm-S/C	6540/-	6940/-
Plate Combo Set with Lock and Cyl.70mm-S/C	6540/-	6940/-
8" CY Plate Combo with Lock and Cyl.70mm-D/C	5720/-	6120/-
8" CY Plate Combo with Lock and Cyl.70mm-S/C	5800/-	6200/-



CAMRY



PASSION



RUDRA



FORTUNE

RANGE	STANDARD FINISHES BG/AB/AC/SS/BL	MATT FINISHES BM/MAB/MAC/GG/GB/MB
Handle Set on Rose	3900/-	4300/-
Handle Set on Plate	3900/-	4300/-
Handle Set on 8" CY / KY Plate	3500/-	3900/-
Rose Combo Set with Lock and Cyl. 70mm-D/C	5960/-	6360/-
Plate Combo Set with Lock and Cyl.70mm-D/C	5960/-	6360/-
Rose Combo Set with Lock and Cyl.70mm-S/C	6040/-	6440/-
Plate Combo Set with Lock and Cyl.70mm-S/C	6040/-	6440/-
8" CY Plate Combo with Lock and Cyl.70mm-D/C	5220/-	5620/-
8" CY Plate Combo with Lock and Cyl.70mm-S/C	5300/-	5700/-

CLASSICO

MORTISE HANDLES

indobrass®



ROYAL



AERIES



QUEEN



VICTORIA

RANGE	STANDARD FINISHES BG/AB/AC/SS/BL	MATT FINISHES BM/MAB/MAC/GG/GB/MB
Handle Set on Rose	4100/-	4500/-
Handle Set on Plate	4100/-	4500/-
Handle Set on 8" CY / KY Plate	3600/-	4000/-
Rose Combo Set with Lock and Cyl. 70mm-D/C	6160/-	6560/-
Plate Combo Set with Lock and Cyl.70mm-D/C	6160/-	6560/-
Rose Combo Set with Lock and Cyl.70mm-S/C	6240/-	6640/-
Plate Combo Set with Lock and Cyl.70mm-S/C	6240/-	6640/-
8" CY Plate Combo with Lock and Cyl.70mm-D/C	5320/-	5720/-
8" CY Plate Combo with Lock and Cyl.70mm-S/C	5400/-	5800/-



DESTINY



GEMINI



MONARCH



TREGENT



ROMANO

RANGE	STANDARD FINISHES BG/AB/AC/SS/BL	MATT FINISHES BM/MAB/MAC/GG/GB/MB
Handle Set on Rose	3600/-	4000/-
Handle Set on Plate	3600/-	4000/-
Handle Set on 8" CY / KY Plate	3100/-	3500/-
Rose Combo Set with Lock and Cyl. 70mm-D/C	5660/-	6060/-
Plate Combo Set with Lock and Cyl.70mm-D/C	5660/-	6060/-
Rose Combo Set with Lock and Cyl.70mm-S/C	5740/-	6140/-
Plate Combo Set with Lock and Cyl.70mm-S/C	5740/-	6140/-
8" CY Plate Combo with Lock and Cyl.70mm-D/C	4820/-	5220/-
8" CY Plate Combo with Lock and Cyl.70mm-S/C	4900/-	5300/-

MODESTO

MORTISE HANDLES

indobrass®



LIBRA



CIAZ

RANGE	STANDARD FINISHES BG/AB/AC/SS/BL	MATT FINISHES BM/MAB/MAC/GG/GB/MB
Handle Set on Rose	3100/-	3500/-
Handle Set on Plate	3100/-	3500/-
Handle Set on 8" CY / KY Plate	2600/-	3000/-
Rose Combo Set with Lock and Cyl. 70mm-D/C	5160/-	5560/-
Plate Combo Set with Lock and Cyl.70mm-D/C	5160/-	5560/-
Rose Combo Set with Lock and Cyl.70mm-S/C	5240/-	5640/-
Plate Combo Set with Lock and Cyl.70mm-S/C	5240/-	5640/-
8" CY Plate Combo with Lock and Cyl.70mm-D/C	4320/-	4720/-
8" CY Plate Combo with Lock and Cyl.70mm-S/C	4400/-	4800/-



FLORA



GALAXY



ASSET



MARK

RANGE	STANDARD FINISHES BG/AB/AC/SS/BL	MATT FINISHES BM/MAB/MAC/GG/GB/MB
Handle Set on 8" CY / KY Plate	2200/-	2600/-
8" CY Plate Combo with Lock and Cyl.70mm-D/C	3920/-	4320/-
8" CY Plate Combo with Lock and Cyl.70mm-D/C	4000/-	4400/-

STAINLESS STEEL
MORTISE HANDLES

indobrass®

CODE NO.	DESCRIPTION	M.R.P
9806-H-01	D Type on Rose - 22mm	1600/-



CODE NO.	DESCRIPTION	M.R.P
9806-H-02	L Type on Rose -22mm	1600/-



CODE NO.	DESCRIPTION	M.R.P
9806-H-02C	L Type on 175mmx175mm Plate (CY Hole)-2 mm Plate-19mm	1800/-



CODE NO.	DESCRIPTION	M.R.P
9806-S-14C	I Type Handle	1435/-



CODE NO.	DESCRIPTION	M.R.P
9806-S-18C	S Type Handle	1325/-



PULL HANDLES

SERIES

indobrass®

QUEEN PH	STANDARD FINISHES BG/AB/AC/SS/BL	MATT FINISHES BM/MAB/MAC/GG/GB/MB
250mm PH	3300/-	3900/-
200mm PH	2900/-	3400/-
180mm PH	2400/-	2800/-

VICTORIA PH	STANDARD FINISHES BG/AB/AC/SS/BL	MATT FINISHES BM/MAB/MAC/GG/GB/MB
300mm PH	3800/-	4500/-
250mm PH	3200/-	3800/-

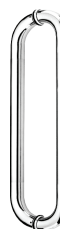
C TYPE	12"	18"	24"	36"	48"
SS CHROME /MATT BLACK	1400/- (Dia 25mm)	1600/- (Dia 25mm)	2500/- (Dia 32mm)	3200/- (Dia 32mm)	3800/- (Dia 32mm)
PVD GOLD /PVD ROSE GOLD	1950/- (Dia 25mm)	2250/- (Dia 25mm)	3400/- (Dia 32mm)	4150/- (Dia 32mm)	4950/- (Dia 32mm)

H TYPE	12"	18"	24"	36"	48"
SS CHROME /MATT BLACK	1300/- (Dia 25mm)	1500/- (Dia 32mm)	2300/- (Dia 32mm)	2900/- (Dia 32mm)	3500/- (Dia 32mm)
PVD GOLD /PVD ROSE GOLD	1800/- (Dia 25mm)	2100/- (Dia 32mm)	3100/- (Dia 32mm)	3750/- (Dia 32mm)	4550/- (Dia 32mm)

IBPH03	12"	18"	24"	36"	48"
SS CHROME /MATT BLACK	1500/- (Dia 25mm)	1700/- (Dia 25mm)	2600/- (Dia 25mm)	3400/- (Dia 25mm)	4000/- (Dia 25mm)
PVD GOLD /PVD ROSE GOLD	2100/- (Dia 25mm)	2400/- (Dia 25mm)	3500/- (Dia 25mm)	4400/- (Dia 25mm)	5200/- (Dia 25mm)

IBPH04	12"	18"	24"	36"	48"
SS CHROME /MATT BLACK	1600/- (Dia 32mm)	1800/- (Dia 32mm)	2700/- (Dia 32mm)	3500/- (Dia 32mm)	4200/- (Dia 32mm)
PVD GOLD /PVD ROSE GOLD	2250/- (Dia 32mm)	2500/- (Dia 32mm)	3650/- (Dia 32mm)	4550/- (Dia 32mm)	5450/- (Dia 32mm)

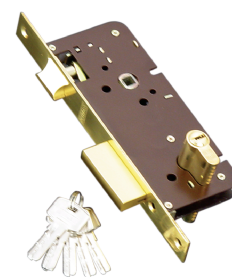
IBPH05	12"	18"	24"	36"	48"
SS CHROME /MATT BLACK	1700/- (Dia 38mm)	1900/- (Dia 38mm)	3300/- (Dia 38mm)	4200/- (Dia 38mm)	5100/- (Dia 38mm)
PVD GOLD /PVD ROSE GOLD	2400/- (Dia 38mm)	2650/- (Dia 38mm)	4450/- (Dia 38mm)	5450/- (Dia 38mm)	6650/- (Dia 38mm)



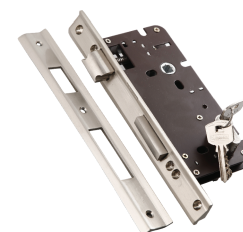
LOCKS

indobrass®

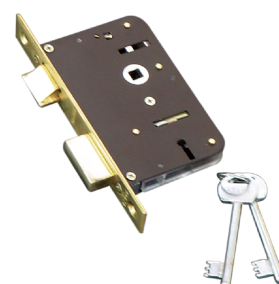
LOCKS	SIZE	FINISH BG AB AC SS BL
Mortise Lock	250mm	1120/-
Mortise Lock (Small)	200mm	780/-



LOCKS	SIZE	FINISH BG AB AC SS BL
Double Door Lock	250mm	1980/-



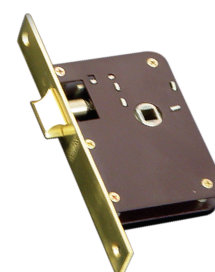
LOCKS	SIZE	FINISH BG AB AC SS BL
Lever Lock	200mm	720/-



LOCKS	SIZE	FINISH BG AB AC SS BL
Dead Bolt	200mm	880/-



LOCKS	SIZE	FINISH BG AB AC SS BL
Baby Latch	200mm	680/-



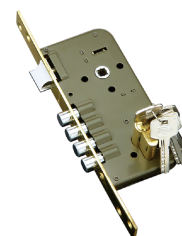
HIGH SECURITY LOCKS

indobrass®

LOCKS	
7ft. 3 Point Lock	6400/-



LOCKS	
4 Bolts Lock	1420/-



LOCKS	
3 Pin Dead Bolts	1100/-

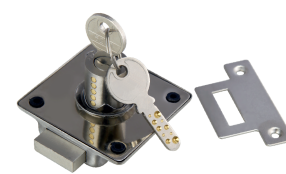


FURNITURE LOCKS

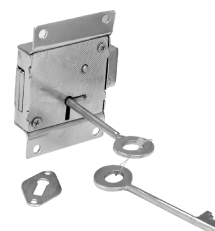
LOCKS	
Sliding Lock	600/-



LOCKS	
Cupboard Lock	540/-



LOCKS	
Universal Cupboard Lock	380/-



LOCKS	
Multi Lock	390/-



CYLINDERS

indobrass®

CYLINDERS WITH 3 NORMAL KEYS	SIZE	MRP
Both Side Key (D/C)	60mm	830/-
Key & Knob (S/C)	60mm	910/-
Knob & Coin (B/R)	60mm	830/-
Both Side Key (D/C)	70mm	940/-
Key & Knob (S/C)	70mm	1020/-
Knob & Coin (B/R)	70mm	940/-
Both Side Key (D/C)	80mm	1120/-
Key & Knob (S/C)	80mm	1190/-
Knob & Coin (B/R)	80mm	1120/-
Both Side Key (D/C)	90mm	1330/-
Key & Knob (S/C)	90mm	1420/-
Knob & Coin (B/R)	90mm	1330/-
Both Side Key (D/C)	100mm	1430/-
Key & Knob (S/C)	100mm	1520/-
Knob & Coin (B/R)	100mm	1430/-



BOTH SIDE KEY



KEY & KNOB



HALF CYLINDER WITH KEY



HALF CYLINDER WITHOUT KEY

HIGH SECURITY CYLINDERS (ULTRA 5 KEYS)	SIZE	MRP
Both Side Key	60mm	1050/-
Key & Knob	60mm	1120/-
Both Side Key	70mm	1130/-
Key & Knob	70mm	1200/-
Both Side Key	80mm	1350/-
Key & Knob	80mm	1410/-
Both Side Key	90mm	1460/-
Key & Knob	90mm	1540/-
Both Side Key	100mm	1560/-
Key & Knob	100mm	1640/-

HALF CYLINDER	SIZE	MRP
One Side Key /Knob	45mm	1030/-
One Side Key / Knob	50mm	1130/-
One Side Key / Knob	55mm	1250/-

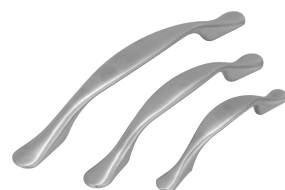
M. K. FOR CYLINDERS	M. K.	G.M.K
Upto 10 Cylinders	280/-	470/-
11 To 50 Cylinders	340/-	590/-
51 To 100 Cylinders	390/-	710/-
Extra Key	350/-	

DOOR ACCESSORIES

indobrass®

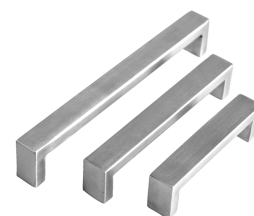
CABINET / DRAWER HANDLES

Cabinet / Drawer Handles (Round)	120/- (2.5")	180/- (4")	220/- (5")
----------------------------------	--------------	------------	------------



CABINET / DRAWER HANDLES

Cabinet / Drawer Handles (Square)	120/- (2.5")	180/- (4")	220/- (5")
-----------------------------------	--------------	------------	------------



WINDOW HANDLES

Window Handles	215/- (5")	260/- (6")	345/- (8")
----------------	------------	------------	------------



TOWER BOLTS (FOR SATIN STEEL / MATT BLACK)

	4"	6"	8"	12"	18"	24"
SQUARE	180/-	270/-	360/-	540/-	810/-	1080/-
ROUND	220/-	330/-	440/-	660/-	990/-	1320/-



TOWER BOLTS (FOR PVD GOLD/PVD ROSE GOLD)

	4"	6"	8"	12"	18"	24"
SQUARE	250/-	400/-	500/-	750/-	1100/-	1400/-
ROUND	300/-	450/-	600/-	900/-	1300/-	1700/-



DOOR ACCESSORIES

indobrass®



HINGES			
	3" x 1" x 2.5mm	4" x 3" x 3mm	5" x 3" x 3mm
Butt Hinges	120/-	-	-
Ball Bearing Hinges	-	400/-	500/-

Wall Mounted	
Door Stopper	260/-



Door Mounted (Normal)	
Door Stopper	390/-



Door Mounted (Foot Action)	
Door Stopper	520/-



Sliding Latch	490/-
---------------	-------



Magnetic Catcher	80/-
------------------	------



indobrass®

Product Profile

With a well defined accent on quality monitors on inputs, process controls and finished products AHIPL offers its customers an extensive range of products generated out of Virgin Brass on semi-automatic forging Italian machine, duly polished on semi automatic machine with Electrophoretic Lacquer for thick & superior long lasting finish..

Our handles are available in the following finishes:-

GLOSSY FINISHES

Brass Gold (BG)

Rose Gold (RG)

Antique Brass (AB)

Antique Copper (AC)

Satin Steel (SS)

Black (BLK)

MATT FINISHES

Matt Gold (MG)

Matt Rose Gold (MRG)

Matt Antique Brass (MAB)

Matt Antique Copper (MAC)

Gunmetal Grey (GG)

Matt Black (MB)

Graphite Black (GB)

NOTE:

1. All disputes are subject to Delhi Jurisdiction only.
2. Prices are subject to change without prior notice.
3. This Price List supersedes all our previous price lists.
4. The above prices are F.O.B. Delhi.
5. The above prices are applicable w.e.f. 1st April'2024.

the art and style
of connecting
DOORS

